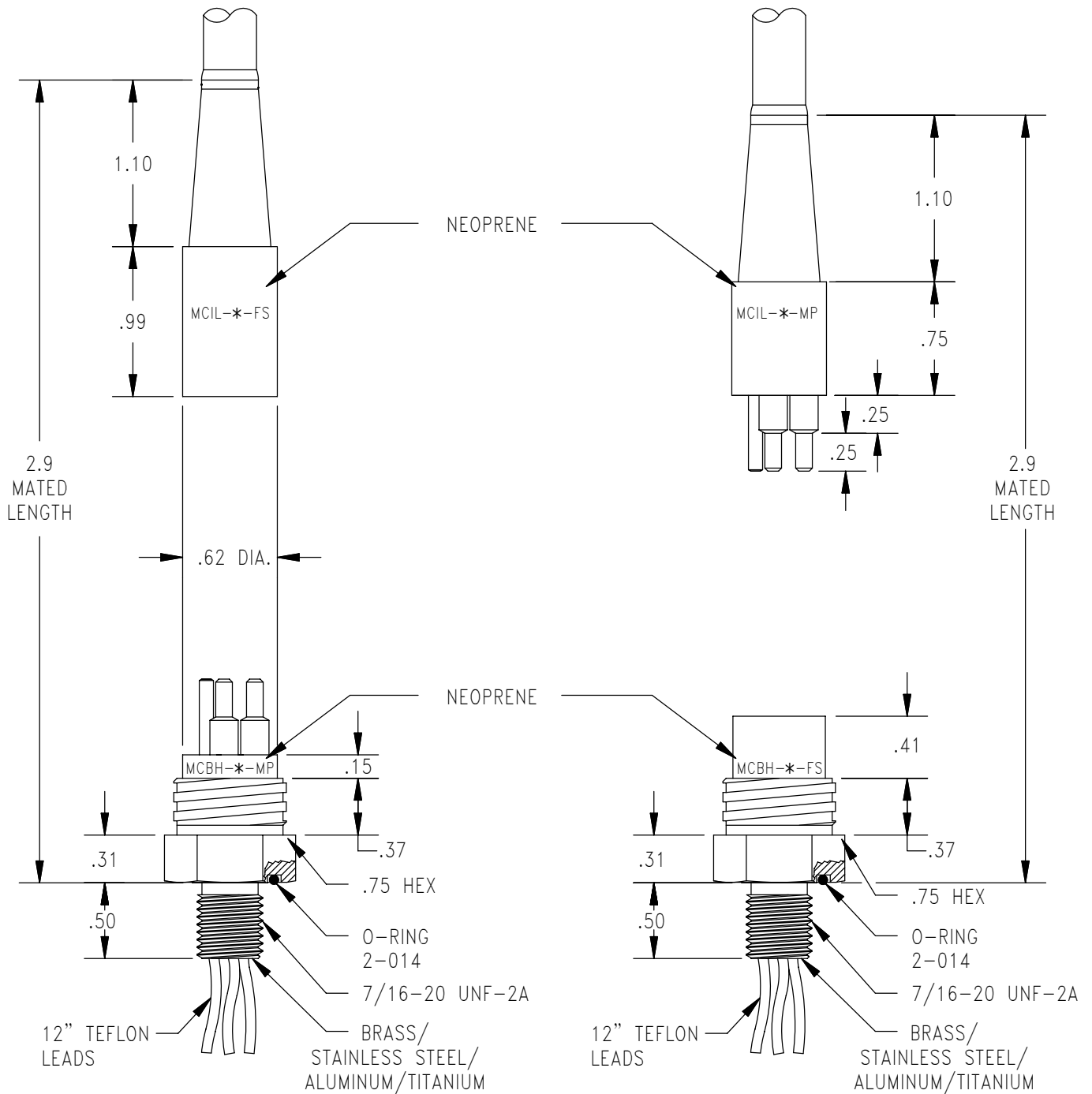

DESCRIPTION AND MATERIAL	<ul style="list-style-type: none">• Molded neoprene or polyurethane.• Two to eight contacts.• Up to 750 VDC.• Up to 10,000 PSI, mated.• Bulkhead connector design open face pressure rated to 5000 PSI.• Contacts gold plated per MIL-G-45204.
CABLE	<ul style="list-style-type: none">• Inline connectors in this series are molded on a standard 24" length of cable, 20 AWG, unless otherwise specified.• Bulkhead connectors have 12" teflon leads, Type E per MIL 16878/4, 20 AWG, (2-4, 9-18 contact) or 22 AWG (5-8 contact).
USES	<ul style="list-style-type: none">• Light to medium duty applications.• Hazardous environments.
GUIDELINES	<ul style="list-style-type: none">• All mounting surfaces require a 32 finish.• Lubricate mating surface with 3M Silicone Spray or equivalent, DO NOT grease! Connectors must be lubricated on a regular basis.• Lubricate o-ring with Dow Corning #111 Valve Lubricant or equivalent.• Replace o-rings when re-using connectors.• Avoid nicks and cuts around contacts as these are the sealing surfaces.• Elastomers can be seriously degraded if exposed to direct sunlight or high ozone levels for extended periods of time.• Do not over tighten bulkhead nuts.• Grip main body of connector during mating or unmating. Do not pull on cable to disconnect.• Avoid sharp bends at cable entry to connector.
ORDERING INFORMATION	<ul style="list-style-type: none">• Bulkhead connectors do not come with nuts and washers. Nuts and washers should be ordered separately.

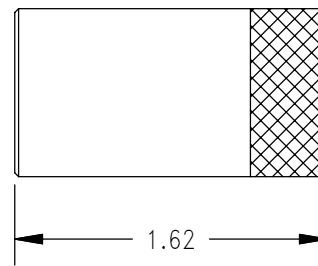
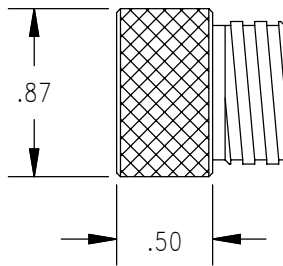


MALE

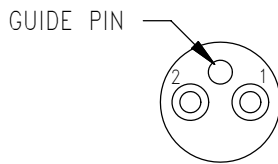
FEMALE

MCDLS-M

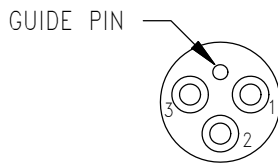
MCDLS-F



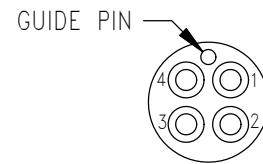
CONTACT
CONFIGURATION
(MP FACE VIEW)



2 #12
W/ GUIDE PIN

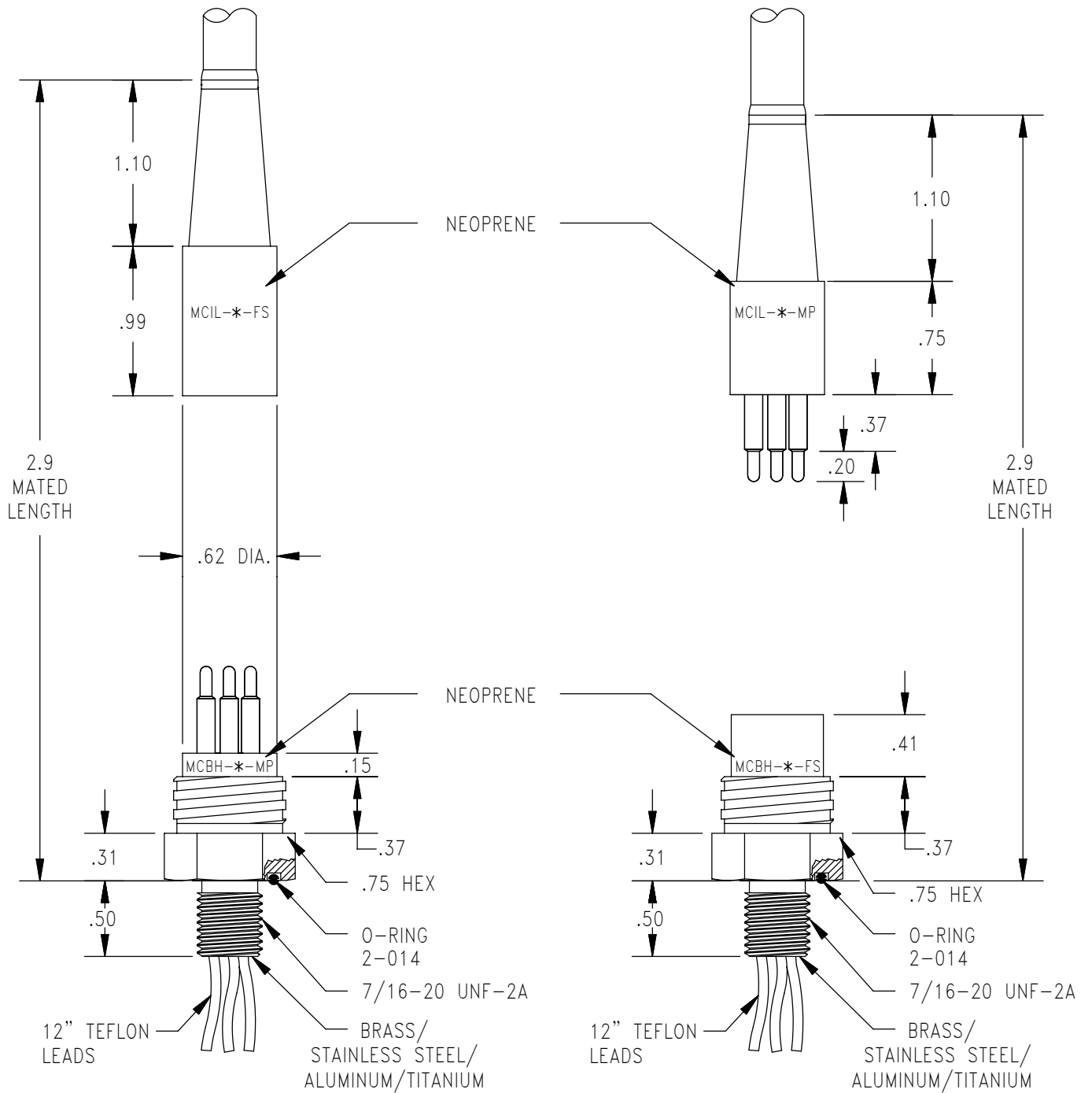


3 #12
W/ GUIDE PIN



4 #12
W/ GUIDE PIN

MOUNTING TORQUE FOR MCIL/BH-FS/MP	not to exceed 100 in lbs
MATED PRESSURE RATING (psi)	10,000
DUMMY PLUG FOR MCIL/BH-FS	MCDC- * -MP
DUMMY PLUG FOR MCIL/BH-MP	MCDC- * -FS
* Specify number of contacts. * Dummy plugs found on page 65 125.	
NOTE: Bulkhead body available in Titanium. Standard 3/4" thread length.	

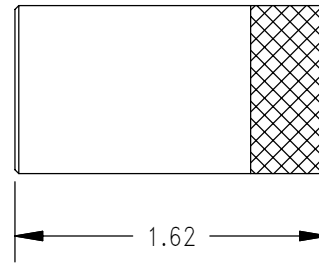
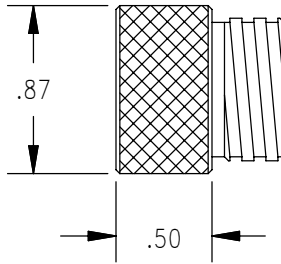


MALE

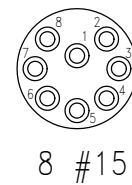
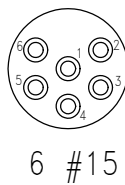
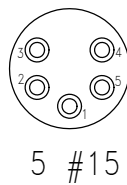
FEMALE

MCDLS-M

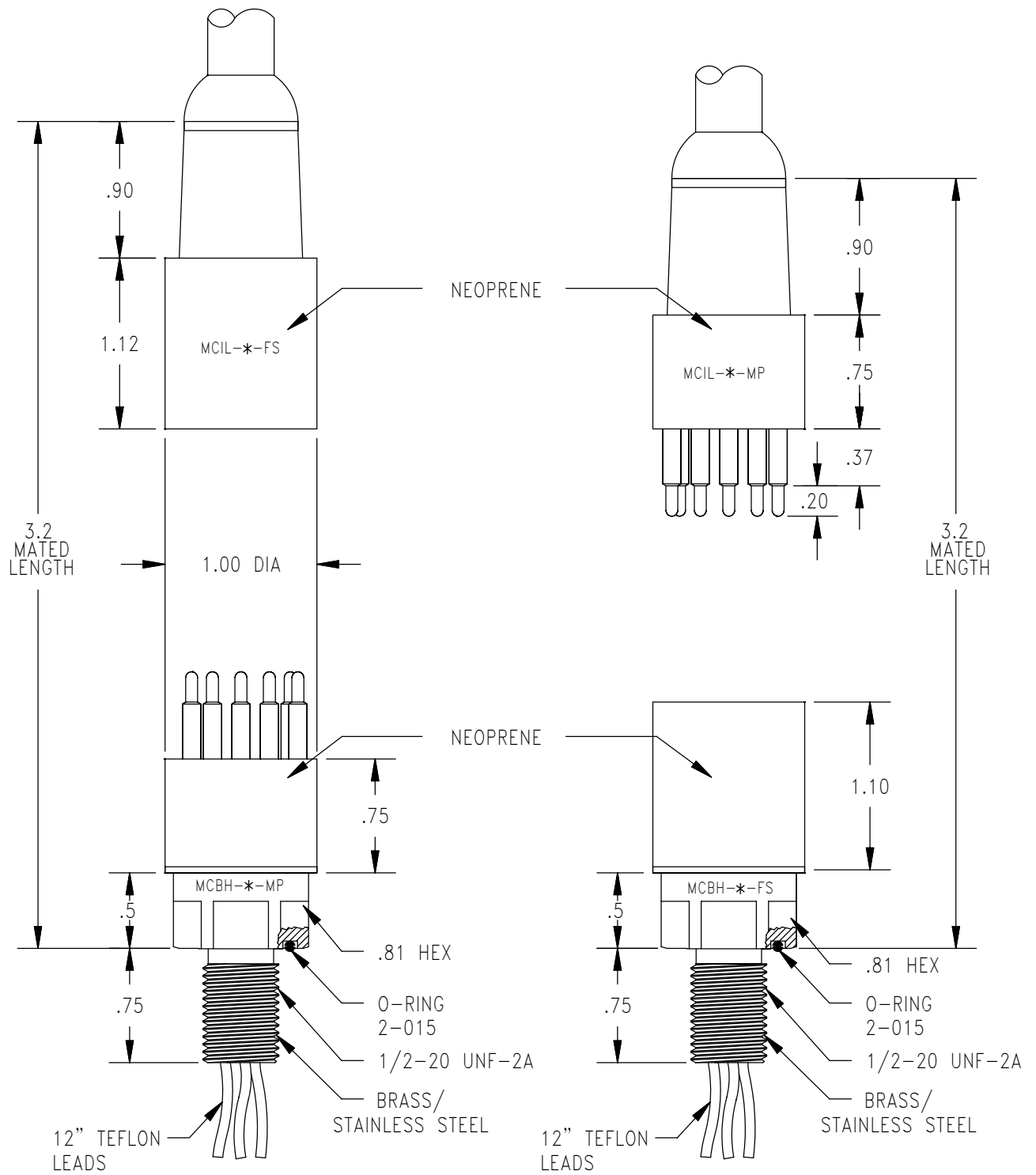
MCDLS-F

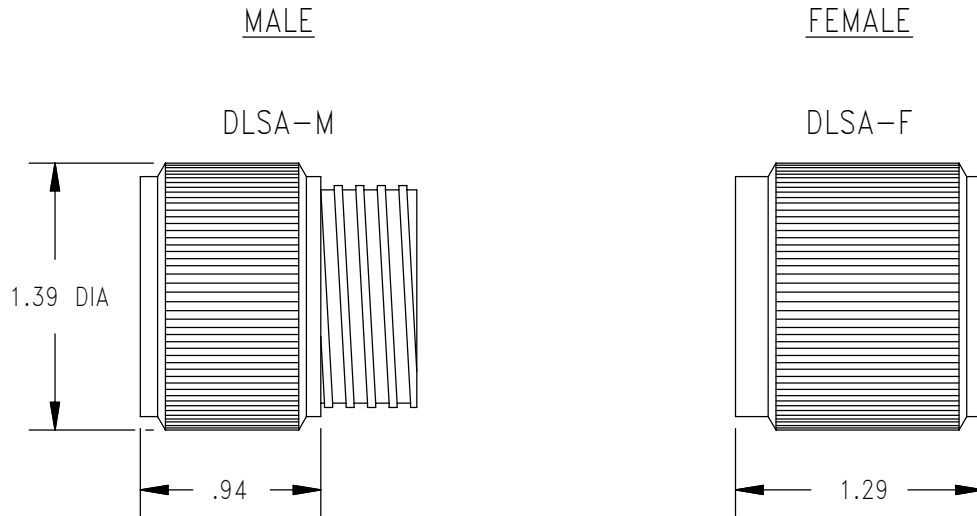


CONTACT
CONFIGURATION
(MP FACE VIEW)

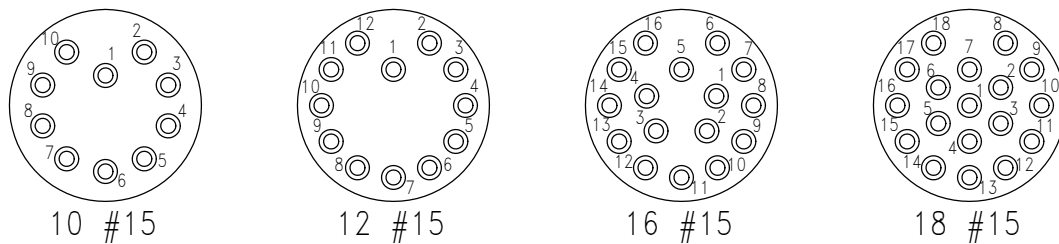


MOUNTING TORQUE FOR MCIL/BH-FS/MP	not to exceed 100 in lbs
MATED PRESSURE RATING (psi)	10,000
DUMMY PLUG FOR MCIL/BH-FS	MCDC- * -MP
DUMMY PLUG FOR MCIL/BH-MP	MCDC- * -FS
* Specify number of contacts. * Dummy plugs found on page 65 125.	
NOTE: Bulkhead body available in Titanium. Standard 3/4" thread length.	





CONTACT
CONFIGURATION
(MP FACE VIEW)



MOUNTING TORQUE FOR MCIL/BH-FS/MP	not to exceed 100 in lbs
MATED PRESSURE RATING (psi)	10,000
DUMMY PLUG FOR MCIL/BH-FS	MCDC- * -MP
DUMMY PLUG FOR MCIL/BH-MP	MCDC- * -FS
* Specify number of contacts. * Dummy plugs found on page 65 126	
NOTE: Bulkhead body available in Titanium. Standard 3/4" thread length.	