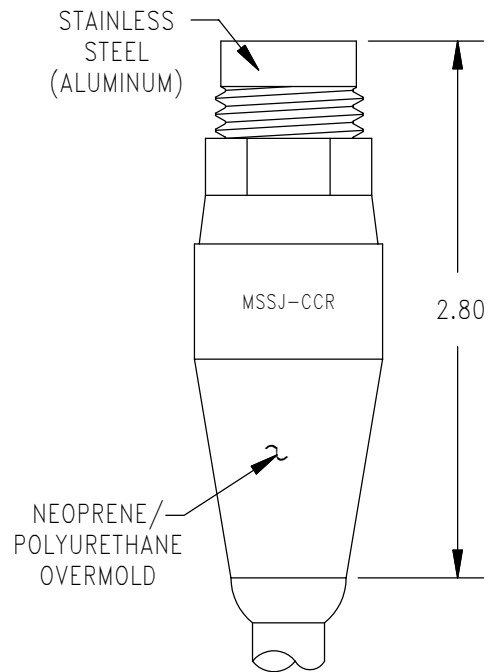
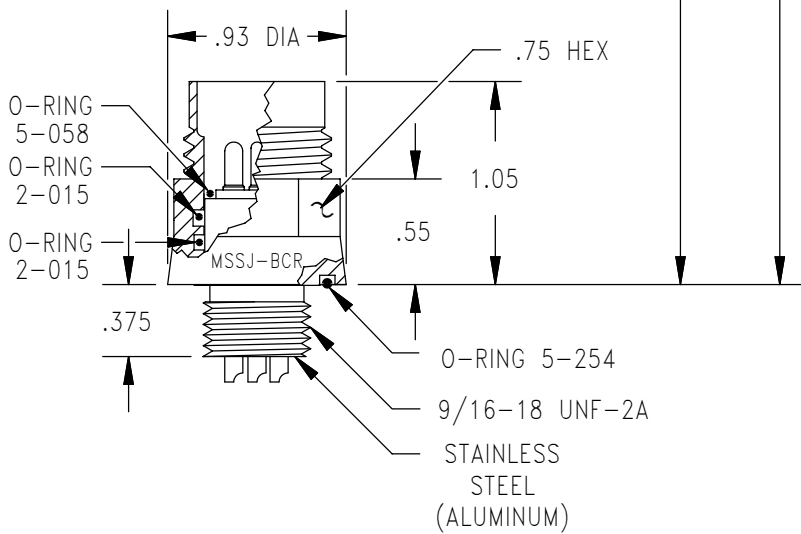
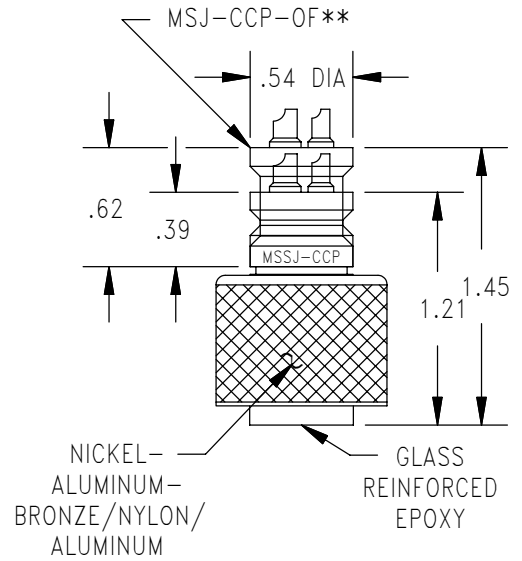
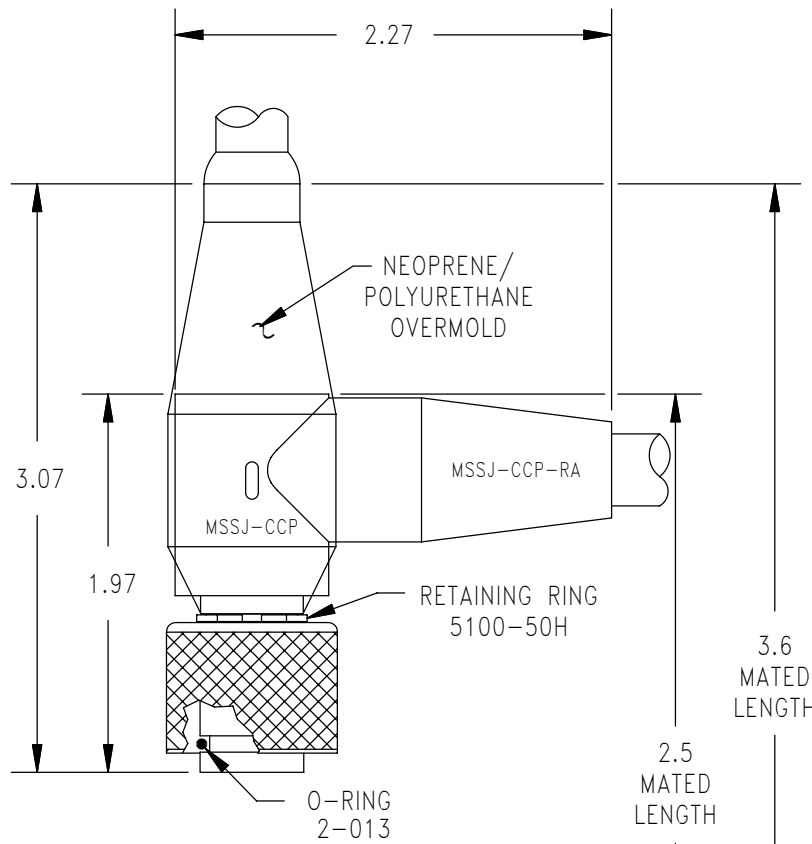
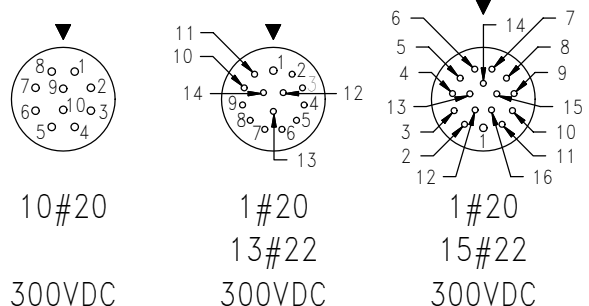
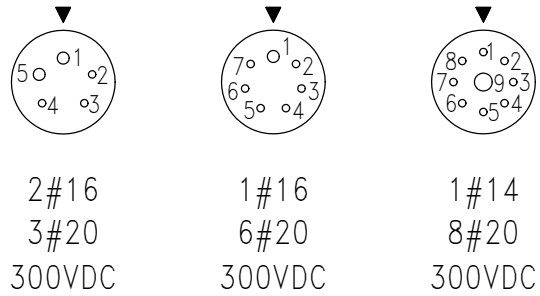
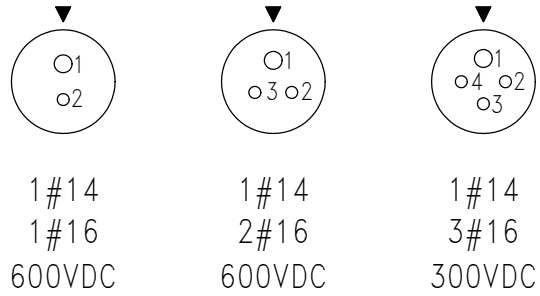
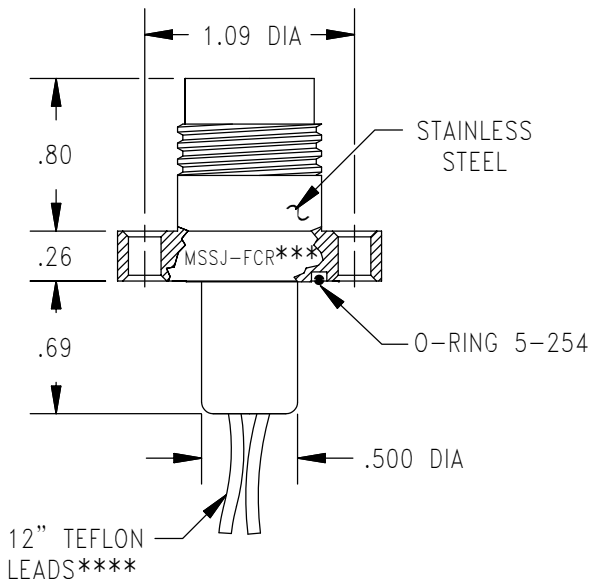
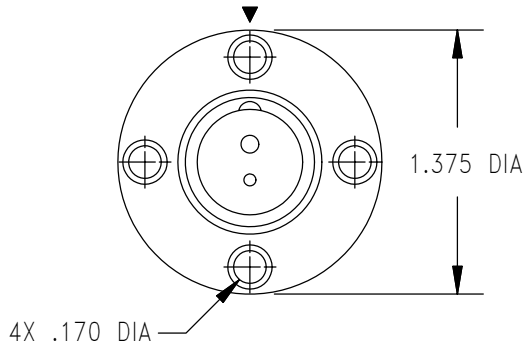


- DESCRIPTION AND MATERIAL
- 316 stainless steel passivated per QQ-P-35 Type VI with naval bronze engaging nut.
  - Optional material is (MSA) 6061-T6 Aluminum, hard anodized per MIL-A-8625, Type III, Class 2.
  - Special alloys are available upon request (contact factory).
  - Contains a removable glass reinforced epoxy insert (with the exception of the MSSJ/MSAJ).
  - One to 96 contacts.
  - Up to 600 VDC. Up to 5000 VDC using high voltage insert.
  - From 10,000 PSI to 20,000 PSI in mated condition (higher pressure rating available using special alloy metal shell; please contact factory).
  - Bulkhead connector design open face pressure rated to 5000 psi.
  - MSS-CCR/CCP connectors can be overmolded with polyurethane or neoprene.
  - Conductor insulation and jacket material of specified cable determines overmold material.
  - Contacts are gold plated per MIL-G-45204.
- CABLE MATERIAL
- Connector's amperage and voltage may be limited by the amperage and voltage ratings of the cable to which the connector is molded.
  - This series is not molded to cable unless specified at the time of order.
- USES MATERIAL
- Heavy duty applications.
  - Hazardous, rugged environment.
  - Power transmission.
  - Signal telemetry.
  - FCR is mounted by use of six equally spaced bolts around the flange surface.
  - FCR is used in place of the BCR when the use of a bulkhead nut and washer is impractical.
  - For all open face pressures above 5,000 PSI the BCR, FCR must be back potted (please contact the factory).
  - The CCR is used in a variety of rugged environments where cable to cable termination is necessary.
- GUIDELINES MATERIAL
- Mounting torque should not exceed 200 in/lbs. for this series.
  - All mounting surfaces require a 32 finish.
  - Align indexes.
  - Keep o-ring grooves clean.
  - Avoid o-ring cuts and nicks.
  - Lubricate o-rings with Dow Corning #111 Valve Lubricant or equivalent.
  - Replace o-rings when re-using connectors.
  - Avoid contact with noxious solvents.
  - Elastomers can be seriously degraded if exposed to direct sunlight or high ozone levels for extended periods of time.



CONTACT  
CONFIGURATION  
(BCR FACE VIEWS)



NOTE: Not available in OF.

MOUNTING TORQUE FOR MSSJ, MSAJ-BCR	not to exceed 100 in lbs	MATED PRESSURE RATING (psi)	10,000
DUMMY PLUG FOR MSSJ-BCR/FCR/CCR	MSSJ-* -SCP	DUMMY PLUG FOR MSSJ-CCP, MSAJ-CCP	MSJ-SCR (Epoxy)
DUMMY PLUG FOR MSAJ-BCR/CCR	MSAJ-* -SCP		

NOTE: CCP is not terminated to cable unless specified.  
Nylon engaging nut used with aluminum body.  
\* Please specify number of contacts.  
\*\* Extended backshell for Oil Filled assemblies.  
\*\*\* Internal assembly same as MSSJ/MSAJ-BCR (facing page).  
\*\*\*\* Solder cup version available.