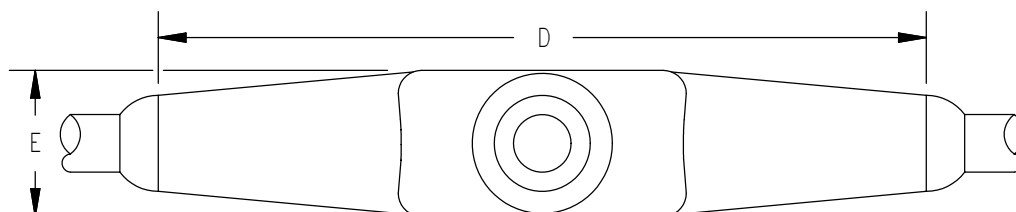
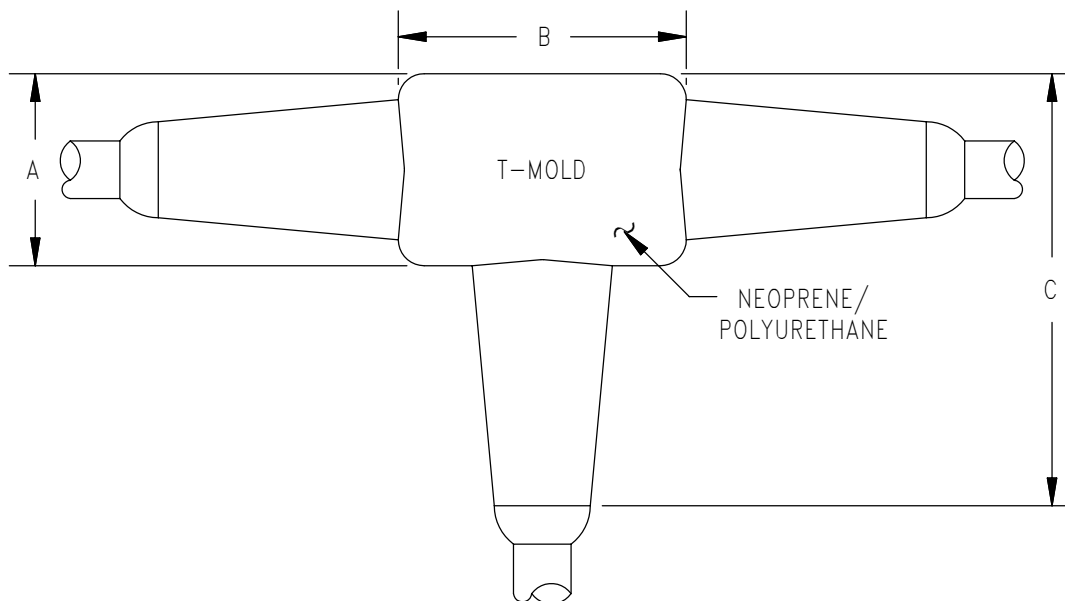
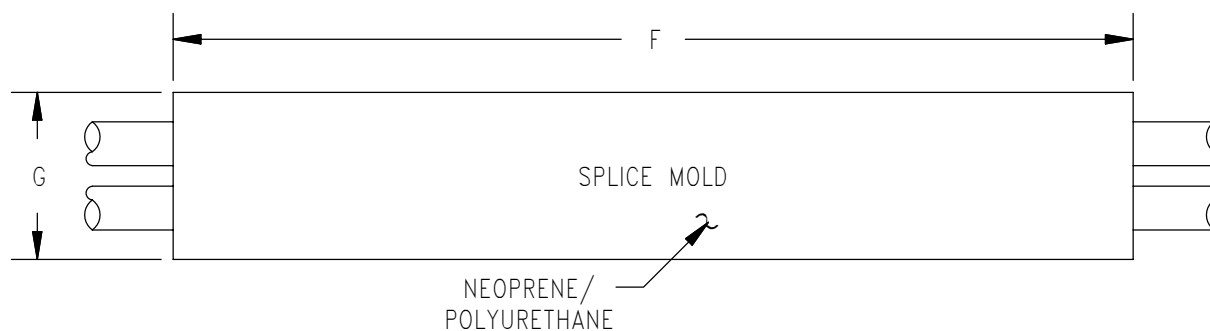


- DESCRIPTION AND MATERIAL
- Molded neoprene or polyurethane
  - Cable jacket and conductor insulation determines overmold material.
  - Number of conductors and cable diameter determines size of mold.
  - Custom molds to customer specifications available upon request, contact factory.
- USES
- Splicing cable.
  - Breakout to several cables.
  - Connect multiple devices to one main line.
  - Economic pressure proof junction box.
- GUIDELINES
- Elastomers can be seriously degraded if exposed to direct sunlight or high ozone levels for extended periods of time.

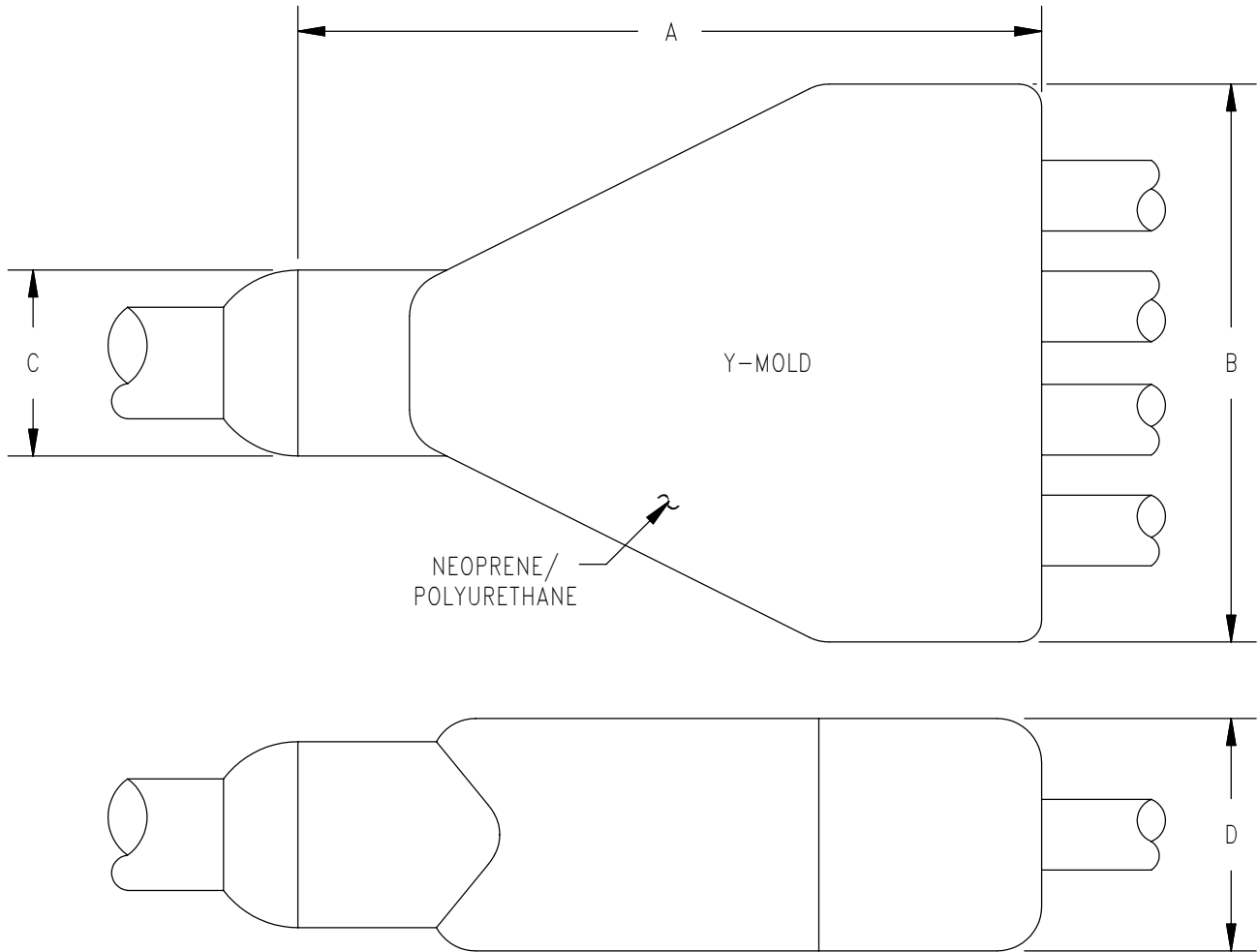


T-MOLDS					
SIZE	A	B	C	D	E
T-15	1.00	1.50	2.25	4.00	.75
T-20	1.50	2.00	3.25	5.45	1.36



SPLICE MOLDS		
SIZE	F	G
SP-20	2.00	∅.87
SP-30	3.00	∅1.50
SP-40	4.00	∅.87
SP-46	4.60	∅1.14

SPLICE MOLDS		
SIZE	F	G
SP-50	5.00	∅.87
SP-50L	5.00	∅1.40
SP-60	6.00	∅2.00



Y-MOLDS				
SIZE	A	B	C	D
Y-20	3.00	2.00	.75	.75
Y-30	4.00	2.80	1.00	1.25
Y-35	4.34	3.50	1.00	1.50
Y-45	5.50	4.40	1.25	1.75
Y-60	6.60	6.00	1.50	2.00